



we are
preci-dip



preci

RUGGED
SOLUTIONS FOR
THE AUTOMOTIVE
INDUSTRY

TOTAL AND TAILORED

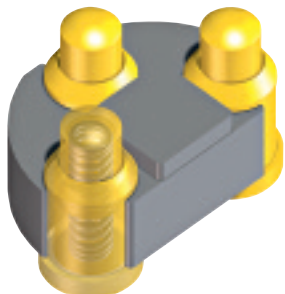
swiss world connects

DRIVEN BY CUTTING-EDGE TECHNOLOGY, PRECI-DIP DEVELOPS STATE-OF-THE-ART SOLUTIONS FOR THE AUTOMOTIVE INDUSTRY

INNOVATION DELIVERED

In today's fast-moving automotive market, innovative solutions and products are required to satisfy tomorrow's most stringent demands. PRECI-DIP is dedicated to meeting the market's key challenges such as performance, miniaturization and lightness. With more than 20 years' experience, PRECI-DIP benefits from unique expertise in developing and manufacturing contacts and connectors for a host of applications in motor and agricultural vehicles, railway rolling stock, tramways, subways, etc.

A wide range of skills and products allows us to deliver the right products for all applications. Whether embedded electronics such as sat nav or advanced features such as cameras, radars or sensors, PRECI-DIP addresses any needs in the automotive market.

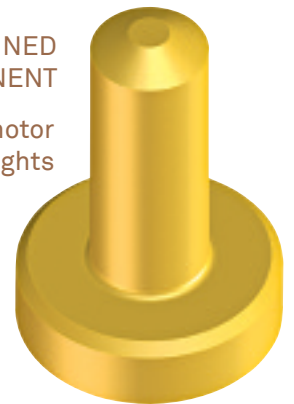


LOW-PROFILE 3-WAY SPRING-LOADED CONNECTOR WITH LIMITED BOARD SPACING

- Small size and high performance especially under vibrations
- Used as an RF interface for cellular wireless communication modules in automotive applications

SCREW-MACHINED COMPONENT

- Used in LED motor vehicle headlights



PCB SOLDER SOCKET CONTACT

- Integrating multi-finger clip technology
- Used in dashboard indicator applications

AN ARRAY OF APPLICATIONS

PRECI-DIP's broad product portfolio includes spring-loaded contacts and connectors, board-to-board connectors, special custom-designed connectors, high-performance contacts and connectors designed for heavy-duty and harsh environments.

Whatever your automotive connection needs may be, PRECI-DIP is your dedicated partner to find and implement the right solution for your application.

preci-mot.com