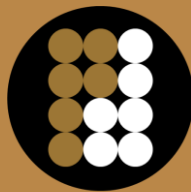
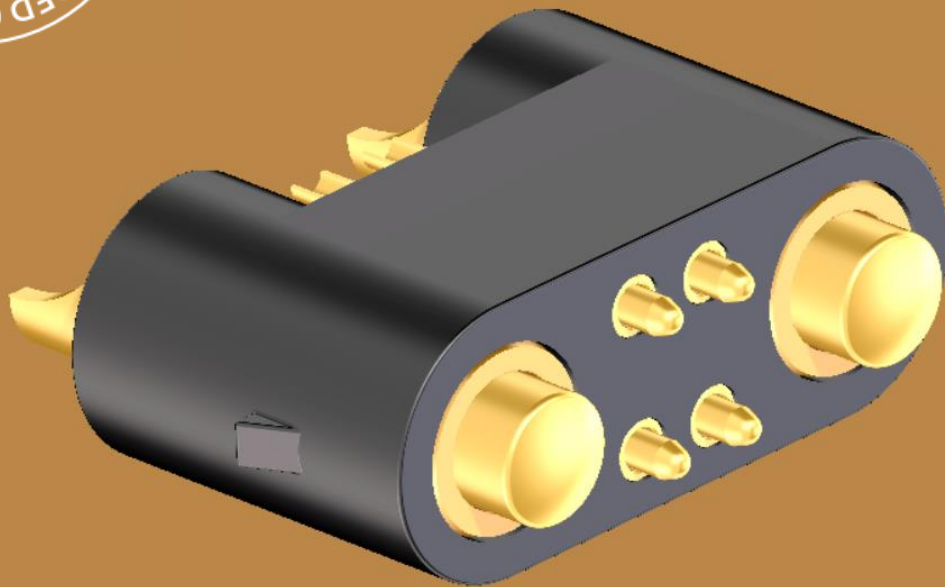


HYBRID CONNECTORS

FOCUS ON CONNECTORS USING SIGNAL AND POWER
SPRING LOADED CONTACTS

CUSTOMIZED SOLUTIONS TO FULFILL YOUR REQUIREMENTS



preci-dip

swiss world connects



preci-dip

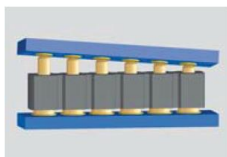
PRECI-DIP SPRING LOADED CONTACTS

PRECI-DIP is a world leader in design and manufacturing of spring loaded contacts. We offer a full range of products in consumer, industrial, medical, MIL aero and automotive applications.

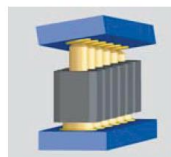


ADVANTAGES OF SPRING LOADED CONTACTS

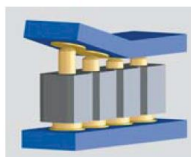
Spring loaded contacts facilitate blind mating requirements, are more tolerant to misaligned and non-coplanar mating conditions and capable of achieving up to one million mating cycles.



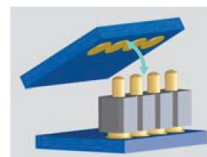
Accepts important positioning tolerances of the connectors



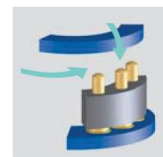
Connects surfaces non-perpendicular to the contact axis



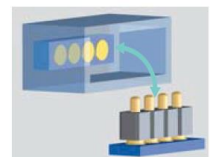
Compensates errors of parallelism and flatness



Connects pivoting or rotating elements



Connects with sliding mating action (push & lock)



Suitable for blind mating

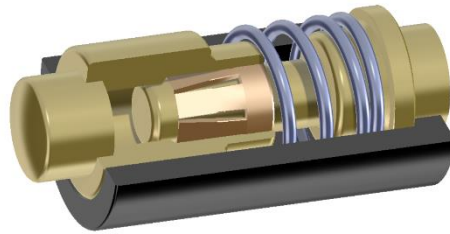


preci-dip

PRECI-DIP has also developed products to fulfill:

- Differential pair configurations to meet USB 3 and similar high data rate requirements
- RF applications such as 5G network requirements for 6GHz and above
- Power applications up to 20A (30A peak)
- Miniature pitch down to 1 mm
- High corrosion-resistance versions achieving 500hrs salt spray exposure
- A complete range of board and wire terminations
- Low height applications (1.5 mm board to board)
- Tape and reel or bulk packaging

A PATENTED PRECI-DIP TECHNOLOGY, FOR HEAVY DUTY AND POWER APPLICATIONS



With many years of experience in spring loaded contact manufacturing, covering the full range of spring contact technologies, PRECI-DIP has developed patented designs with integrated multi-finger sliding contact clips, which establishes high-reliability and electrical continuity between bodies and pistons. It also ensures low, stable electrical resistance values without micro-discontinuities, even when the piston is moving or exposed to intensive shocks and vibration.





preci-dip

HYBRID SIGNAL AND POWER CONNECTOR

A complete range of spring loaded connectors, with a wide range of strokes, diameters and current capacities allows PRECI-DIP the possibility to provide customized hybrid connectors, mixing signal and power, to fit with the requirements of today's market.



2 x Power (20A) + 6 x Signal (1A)

CONTACT US

As a vertically integrated company with processes that includes: *screw machining, stamping, plating, plastic moulding, spring manufacturing and automatic assembly* coupled with manufacturing sites in Switzerland, the USA and China, PRECI-DIP is best placed to design and produce the widest range of technologies of spring loaded contacts available on the market today. PRECI-DIP can also manufacture customized product solutions to match your needs. Our R&D team will analyze your specifications and give you the necessary support to meet your requirements.



Do not hesitate to contact us! sales@precidip.com