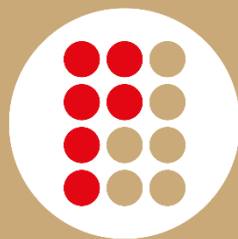


INDUSTRIAL CONTACTS



preci-dip



preci-dip

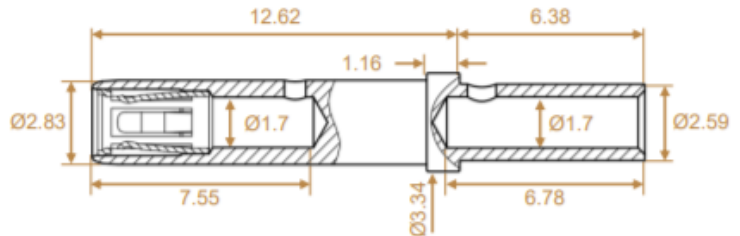
INDUSTRIAL CONTACTS – SIZE 16 AND 20

Identical to MIL QPL:

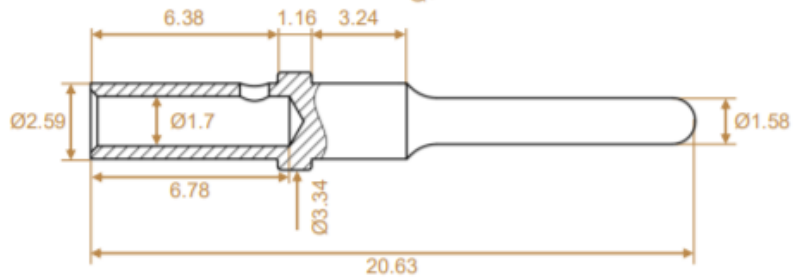
- Dimension
- Mating diameter
- Insertion/ separation forces
- First engagement point

Material: Contact body
Machined brass acc. to ASTM B121/B121M
Clip
BeCu acc. to ASTM B194
Temp. range: -40°C to +125°C

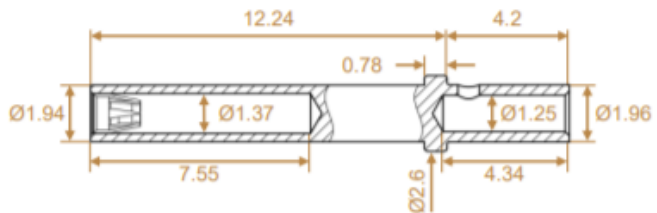
<u>P/N</u>	<u>Plating (Contact area / body)</u>
66101-7Q4-6210	min 1.27µm Au / min 0.125µm Au
66101-B2P-6210	min 0.4µm Au / 2.5µm Ni



<u>P/N</u>	<u>Plating (Contact area / body)</u>
82080-7Q4	min 1.27µm Au / min 0.125µm Au
82080-B0	2.5µm Ni overall



<u>P/N</u>	<u>Plating (Contact area / body)</u>
66037-7Q4-1840	min 1.27µm Au / min 0.125µm Au
66037-B2P-1840	min 0.4µm Au / 2.5µm Ni



<u>P/N</u>	<u>Plating (Contact area / body)</u>
82070-7Q4	min 1.27µm Au / min 0.125µm Au
82070-B0	2.5µm Ni overall

