

preci-dip

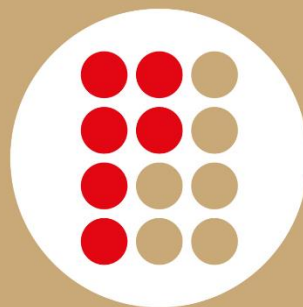
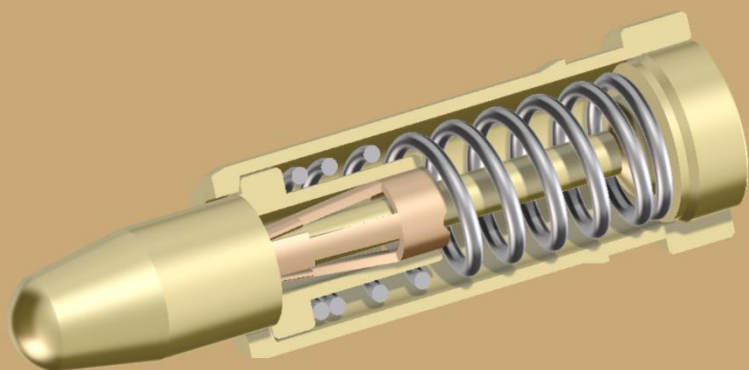
swiss world connects



preci-dip

Spring Loaded Contacts “Clip Technology”

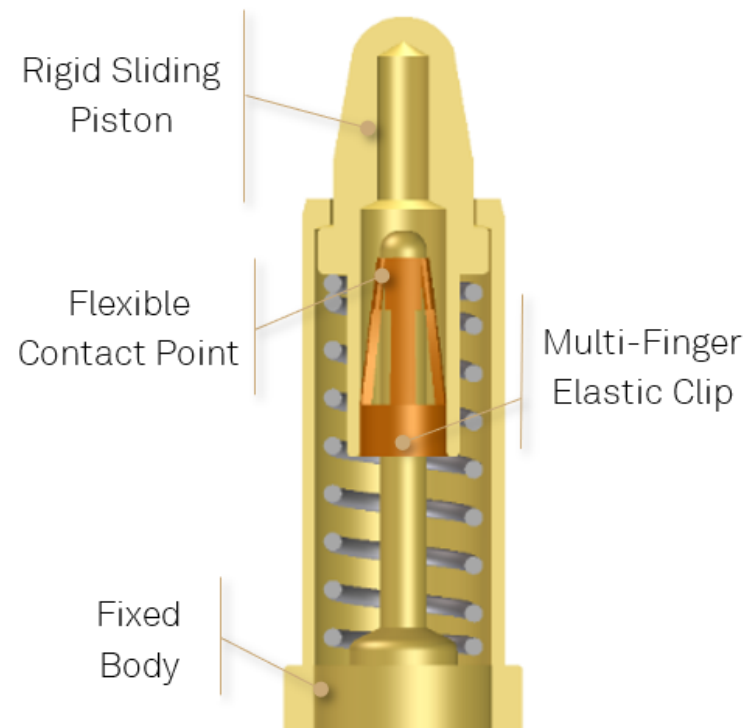
Precise, Reliable, And Cost Effective
Standard Solutions



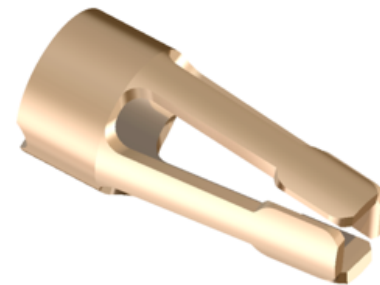
preci-dip

PRECI-DIP Unique Clip Technology In Spring Loaded Contacts

With many years of experience in Spring Loaded Contact manufacturing, PRECI-DIP has developed a patented design with an integrated multi-finger clip, which establishes high-reliability and electrical continuity between body and piston. This solution ensures low, stable electrical resistance without micro-discontinuities, even when the piston is moving or exposed to intensive shocks and vibrations.



A CLIP establishes a reliable and efficient connection between the body and piston.



Compliant to:

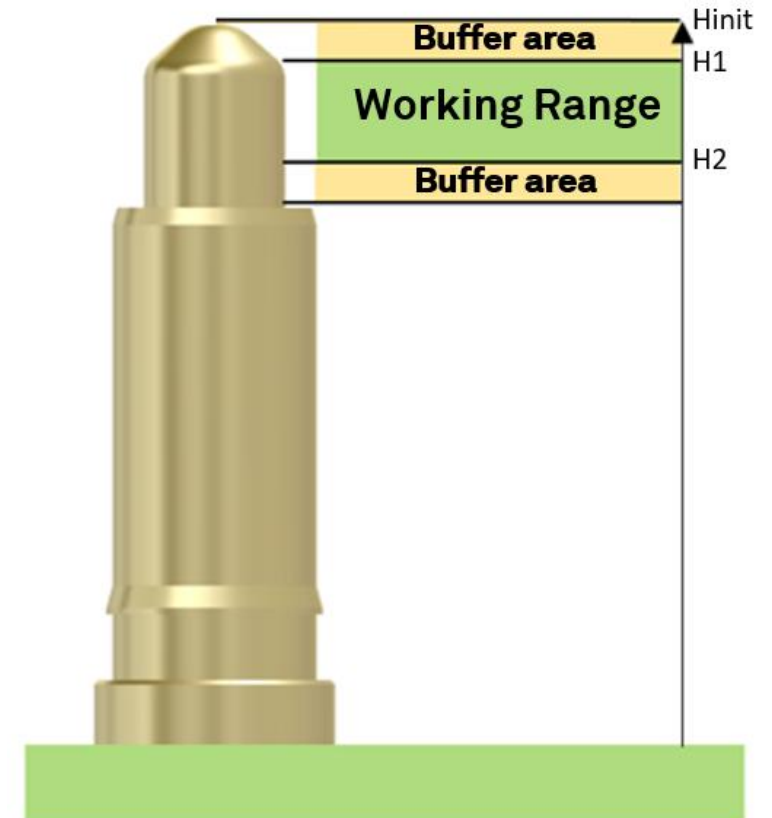
- Shock and vibration up to 2000Hz
- Current up to 25A

Key Characteristics

Spring Loaded Contacts

Spring Loaded Contacts are used to make reliable connections where there are large tolerances between the two mating surfaces. There are three key characteristics: Working Range, Height, and Operating Force:

- The Working Range is equal to the tolerance present between the two mating surfaces, a standard working range is 1.4 mm (.055”).
- The Height of a Spring Loaded Contact is a little bit bigger than the maximum distance between the two mating surfaces, to have a buffer area to guarantee operational contact in all cases.
- The Operating Force must be larger than 0.5N to guarantee the reliability of the connection.



SPRING-LOADED-CONTACTS



preci-dip

Series 0900-CLIP

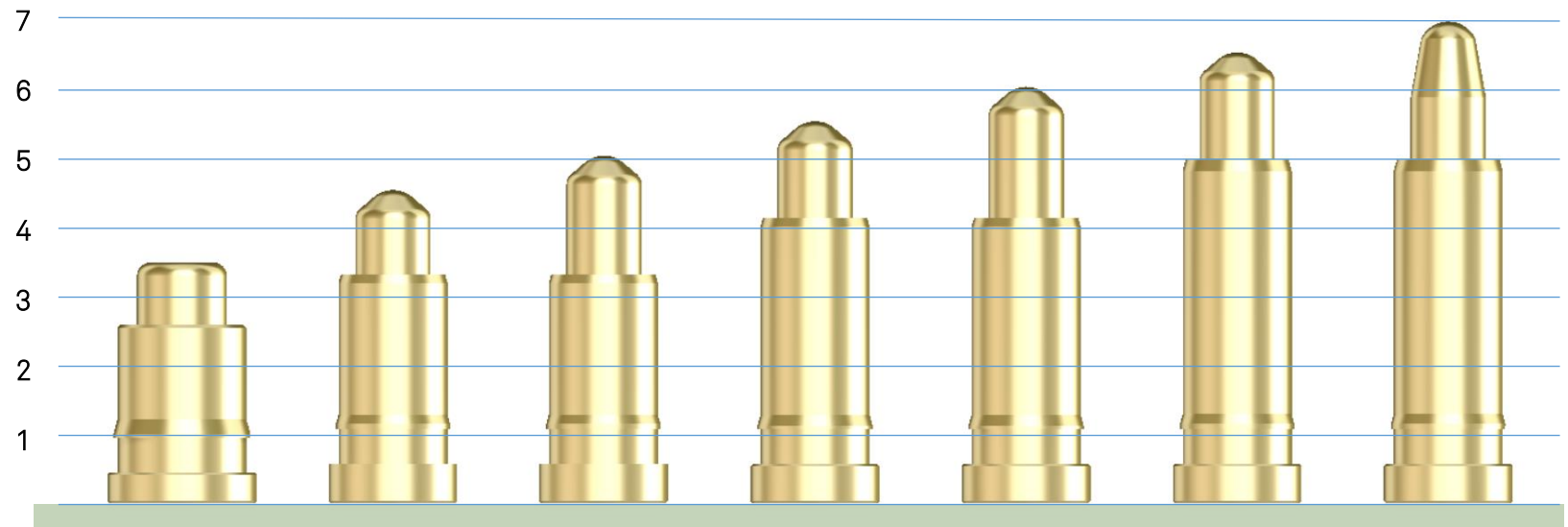
SMT Spring-Loaded Pins full range using CLIP Technology, High Reliability, High Performances, Top Quality

Product details :

- Rated current 5A with 30°C of temperature elevation
- Dynamic Contact Resistance: 20 mΩ
- Durability : 20'000 cycles

**Please contact Preci-Dip for specific technical details and when higher-performance is required*

90637-AS	0900-1-CLIP	0900-2-CLIP	0900-3-CLIP	0900-4-CLIP	0907-0-CLIP	0907-1-CLIP
Initial length: 3.50mm Initial force: 0.60N	Initial length: 4.55mm Initial force: 0.35N	Initial length: 5.05mm Initial force: 0.40N	Initial length: 5.55mm Initial force: 0.40N	Initial length: 6.05mm Initial force: 0.50N	Initial length: 6.55mm Initial force: 0.50N	Initial length: 7,00 mm Initial force: 0.50N
Working range: 3.33 – 2.7	Working range: 3.33 – 3.75	Working range: 4.85 – 4.00	Working range: 5.35 – 4.25	Working range: 5.80 – 4.60	Working range: 6.35 – 5,15	Working range: 6.85 – 5,45
Ø Ext. 2,12mm	Ø Ext. 1.83mm	Ø Ext. 1.83mm	Ø Ext. 1.83mm	Ø Ext. 1.83mm	Ø Ext. 1.83mm	Ø Ext. 1.83mm
	Available in T+R	Available in T+R	Available in T+R	Available in T+R	Available in T+R	Available in T+R
See drawing	See drawing	See drawing	See drawing	See drawing	See drawing	See drawing



SPRING-LOADED-CONTACTS



preci-dip

Series 0900-CLIP

SMT Spring-Loaded Pins full range using CLIP Technology, High Reliability, High Performances, Top Quality

Product details :

- Rated current 5A with 30°C of temperature elevation
- Dynamic Contact Resistance: 20 mΩ
- Durability : 20'000 cycles

**Please contact Preci-Dip for specific technical details and when higher-performance is required*

0907-2-CLIP

Initial length:
7.55 mm
Initial force: 0.60N

Working range:
7,35 – 5,95

Ø Ext. 1.83mm

Available in
T+R

[See drawing](#)

0907-3-CLIP

Initial length:
8,05mm
Initial force: 0.60N

Working range:
7,85 – 6,45

Ø Ext. 1,83mm

Available in
T+R

[See drawing](#)

0907-4-CLIP

Initial length:
8,55mm
Initial force: 0.35N

Working range:
8,35 – 6,95

Ø Ext. 1.83mm

Available in
T+R

[See drawing](#)

0907-5-CLIP

Initial length:
9,05mm
Initial force: 0.40N

Working rang:
8,85 – 7,65 (0.9N)

Ø Ext. 1.83mm

Available in
T+R

[See drawing](#)

0907-6-CLIP

Initial length:
9.55mm
Initial force: 0.40N

Working rang:
9,35 – 7,95 (1.0N)

Ø Ext. 1.83mm

Available in
T+R

[See drawing](#)

0907-7-CLIP

Initial length:
10,05mm
Initial force: 0.50N

Working rang:
9,85 – 8,45

Ø Ext. 1.83mm

Available in
T+R

[See drawing](#)

0907-8-CLIP

Initial length:
10,55mm
Initial force: 0.35N

Working rang:
10,35 – 8,95

Ø Ext. 1.83mm

Available in
T+R

[See drawing](#)

0907-9-CLIP

Initial length:
11,05 mm
Initial force: 0.5N

Working rang:
10,85 – 9,45

Ø Ext. 1.83mm

Available in
T+R

[See drawing](#)



SPRING-LOADED-CONTACTS



preci-dip

Series 0900-CLIP

THT Spring-Loaded Pins full range using CLIP Technology, High Reliability, High Performances, Top Quality

Product details :

- Rated current 5A with 30°C of temperature elevation
- Dynamic Contact Resistance: 20 mΩ
- Durability : 20'000 cycles

**Please contact Preci-Dip for specific technical details and when higher-performance is required*

0908-0-CLIP

Initial length:
6.55 mm
Initial force: 0.50N

Working range:
6,35 – 5,15

Ø Ext. 1.83mm

Available in
T+R

[See drawing](#)

0908-1-CLIP

Initial length:
7,05mm
Initial force: 0.50N

Working range:
6,85 – 5,45

Ø Ext. 1.83mm

Available in
T+R

[See drawing](#)

0908-2-CLIP

Initial length:
7,55mm
Initial force: 0.50N

Working range:
7,35 – 5,95

Ø Ext. 1.83mm

Available in
T+R

[See drawing](#)

0908-3-CLIP

Initial length:
8,05mm
Initial force: 0.50N

Working rang:
7,85 – 6,45

Ø Ext. 1.83mm

Available in
T+R

[See drawing](#)

90740-AS

Initial length:
8.55mm
Initial force: 0.50N

Working rang:
8,3 – 6,95

Ø Ext. 1.83mm

Available in
T+R

[See drawing](#)

90773-AS

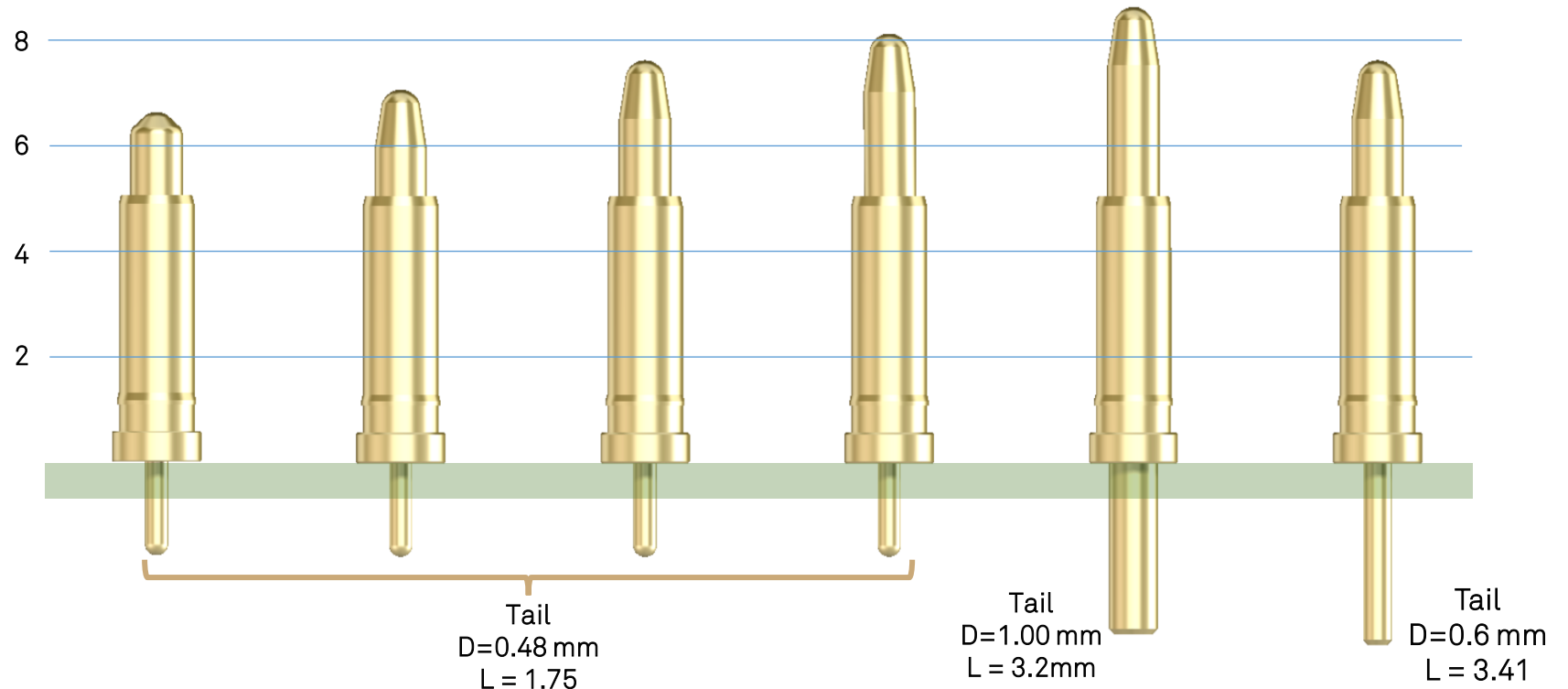
Initial length:
7,55 mm
Initial force: 0.50N

Working rang:
6,35 – 5,15

Ø Ext. 1.83mm

Available in
T+R

[See drawing](#)



SPRING-LOADED-CONTACTS



preci-dip

Series 0900-CLIP

THT Spring-Loaded Pins full range using CLIP Technology, High Reliability, High Performances, Top Quality

Product details :

- Rated current 5A with 30°C of temperature elevation
- Dynamic Contact Resistance: 20 mΩ
- Durability : 20'000 cycles

**Please contact Preci-Dip for specific technical details and when higher-performance is required*

90629-AS

Total length :
7.46mm
Board distance :
5.76mm

Initial force: 0.46N

Working range:
5,56 – 4,36

Ø Ext. 3,0 mm

Available in
T+R

[See drawing](#)

90625-AS

Total Length:
7.76 mm
Board distance :
6.06mm

Initial force: 0.46N

Working rang:
7,56 – 6,06

Ø Ext. 3,0 mm

Available in
T+R

[See drawing](#)

90708-AS

Total length :
5.5 mm
Board distance :
4.3 mm

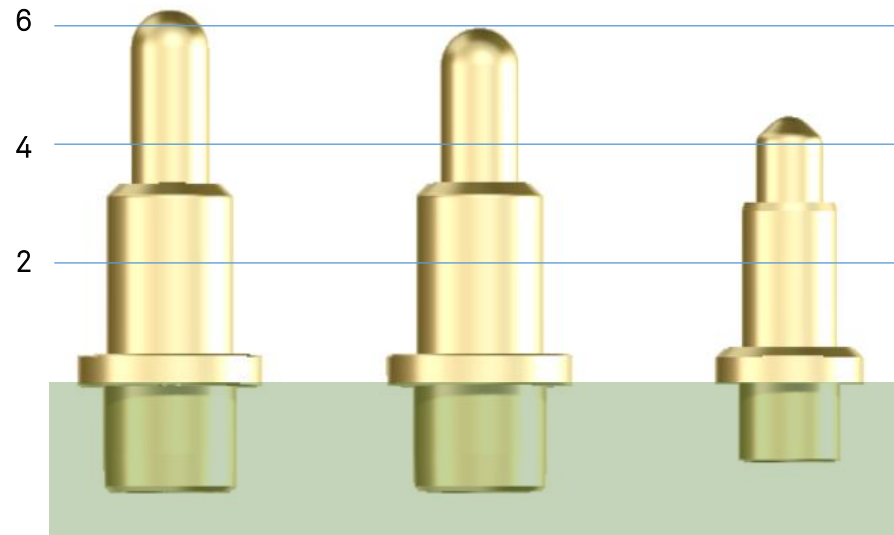
Initial force: 0.50N

Working range:
4,15 – 3,05

Ø Ext. 2,4 mm

Available in
T+R

[See drawing](#)



SPRING-LOADED-CONTACTS



preci-dip

Series 0900-CLIP

Spring-Loaded Pins full range using CLIP Technology, High Reliability, High Performances, Top Quality

Product details :

- Rated current 5A with 30°C of temperature elevation
- Dynamic Contact Resistance: 20 mΩ
- Durability : 20'000 cycles

**Please contact Preci-Dip for specific technical details and when higher-performance is required*

90679-AS

Initial length:
9,7 mm
Initial force: 0,60N

Working range:
9,45 – 7,45 mm

Ø Ext. 2,15 mm

[See drawing](#)

90736-AS

Initial length:
8,7 mm
Initial force: 1,0N

Working range:
8,50 – 6,70 mm

Ø Ext. 1,83mm

[See drawing](#)

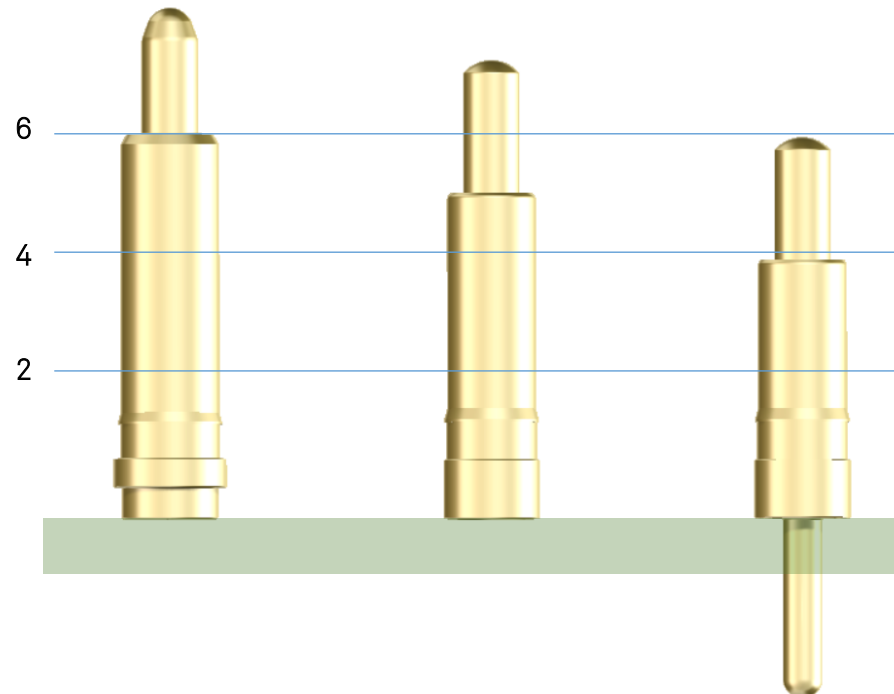
90691-AS

Initial length:
7,23mm
Initial force: 0.50N

Working range:
7,1 – 5,4 mm

Ø Ext. 1.83mm

[See drawing](#)



Series POWER-CLIP

SMT Spring-Loaded Pins full range using CLIP Technology, High Reliability, High Performances, Top Quality

Product details :

- Rated current up to 12 Amps.
- Durability : 20'000 cycles

**Please contact Preci-Dip for specific technical details and when higher-performance is required*

90738-AS
12 Amps
Board distance
12,85 mm
Initial force: 2,1 N
Working range:
12,1 – 9,97 mm
Ø Ext. 3,5 mm
[See drawing](#)



Series POWER-CLIP

SMT Spring-Loaded Pins full range using CLIP Technology, High Reliability, High Performances, Top Quality

Product details :

- Rated current up to 20 Amps.
- Durability : 20'000 cycles

**Please contact Preci-Dip for specific technical details and when higher-performance is required*

90784-AS

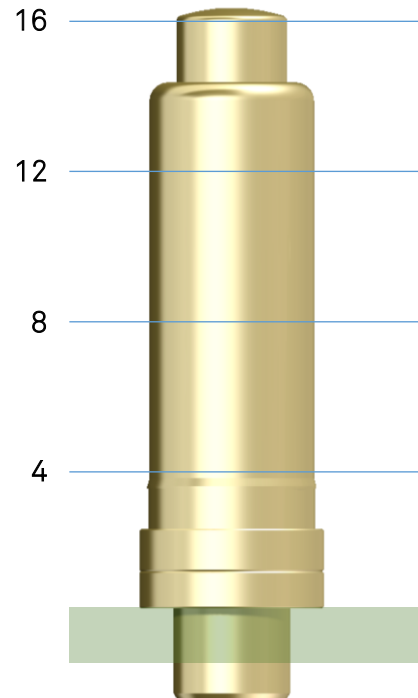
20 Amps

Board distance
16,27 mm
Initial force: 2,1 N

Working range:
15,7-14,37 mm

Ø Ext. 5,0 mm

[See drawing](#)





PRECI-DIP Connection Technology

Custom design is our main strength, and your advantage when your ideas need a development partner. Vast experience with countless standard products and more than 20,000 references. Everything under one roof worldwide: We master all key processes in-house, from raw materials to finished goods.

As a global company we comply with internationally recognized certifications, including ML-STD-790, ISO 9001, Aviasecure Cert, IATF 16949, ISO 14001, EN AS JIQS 9100, UL (E174442), Renewable Energy Certification and the Certificate Act-Energy Efficiency and Climate Protection, just to name a few.



PRECI-DIP SA

Rue Saint-Henri 11 P.O : Box 834 CH-2800

Delémont,
Switzerland

T +41 32 421 04 00

Contact us for more information:

sales@precidip.com

PRECI-DIP LLC

225 Oracal Parkway Ellabell

GA 31308

USA

T +1 912 851 0225

Contact us for more information:

salesusa@precidip.com

PRECI-DIP Connector Shanghai

4th floor, Building# 3 No. 58 Wenxiangdong

Road, Songjiang district

Shanghai, China, PC 201613

T +86 21 60291752

Contact us for more information:

sales@precidip.com