

NOTES:

Material:

Shell: Standard Brass
Clip: Beryllium Copper

Finish:

88 : Clip 5µm(200µ') Tin over Ni, Shell 5µm(200µ') Tin over Ni
83 : Clip 0.75µm(30µ') Gold over Ni, Shell 5µm(200µ') Tin over Ni
For other plating configuration please consult.

Electrical:

Clip code 0710
Rated current 15 Amps
Contact resistance max. 15 milliohms

Mating Pin Size:

1,5 - 2,0 mm [,059' - ,078']

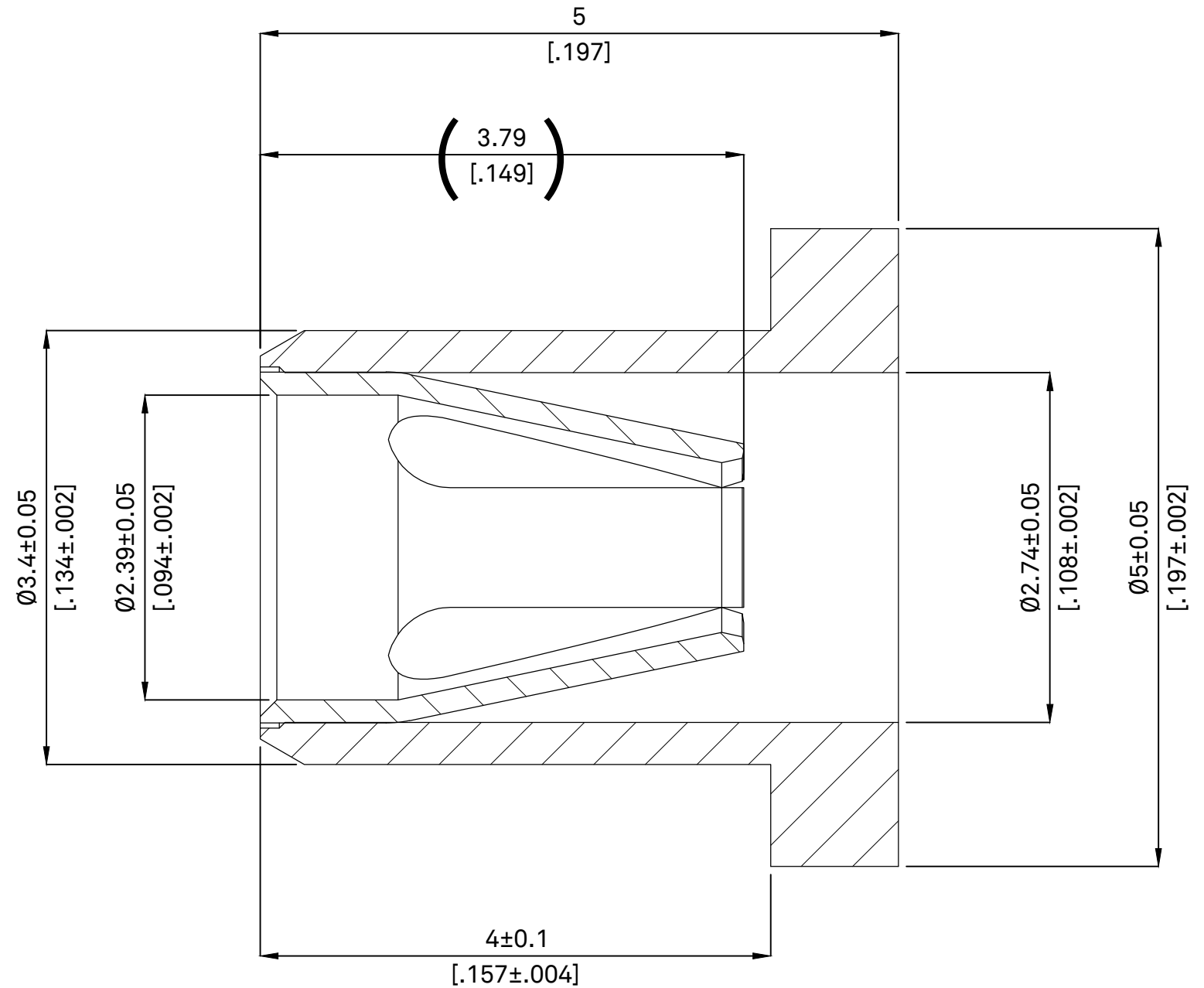
Environmental:

Temperature range : -55°C to +125°C

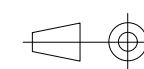
Mechanical:

Recommanded PCB Mouting hole 3,47 mm [,136']
Mechanical life min. 500 cycles

For complete mechanical and electrical specification, see CLI
Specification regarding Clip Code Number.



Socket Contact



1:1

Remplace:

Remplace par:

Dessine	11.01.2023	C.Bidault
---------	------------	-----------

Controle		
----------	--	--

N° dessin	Revision
-----------	----------

15114-PP-0710

